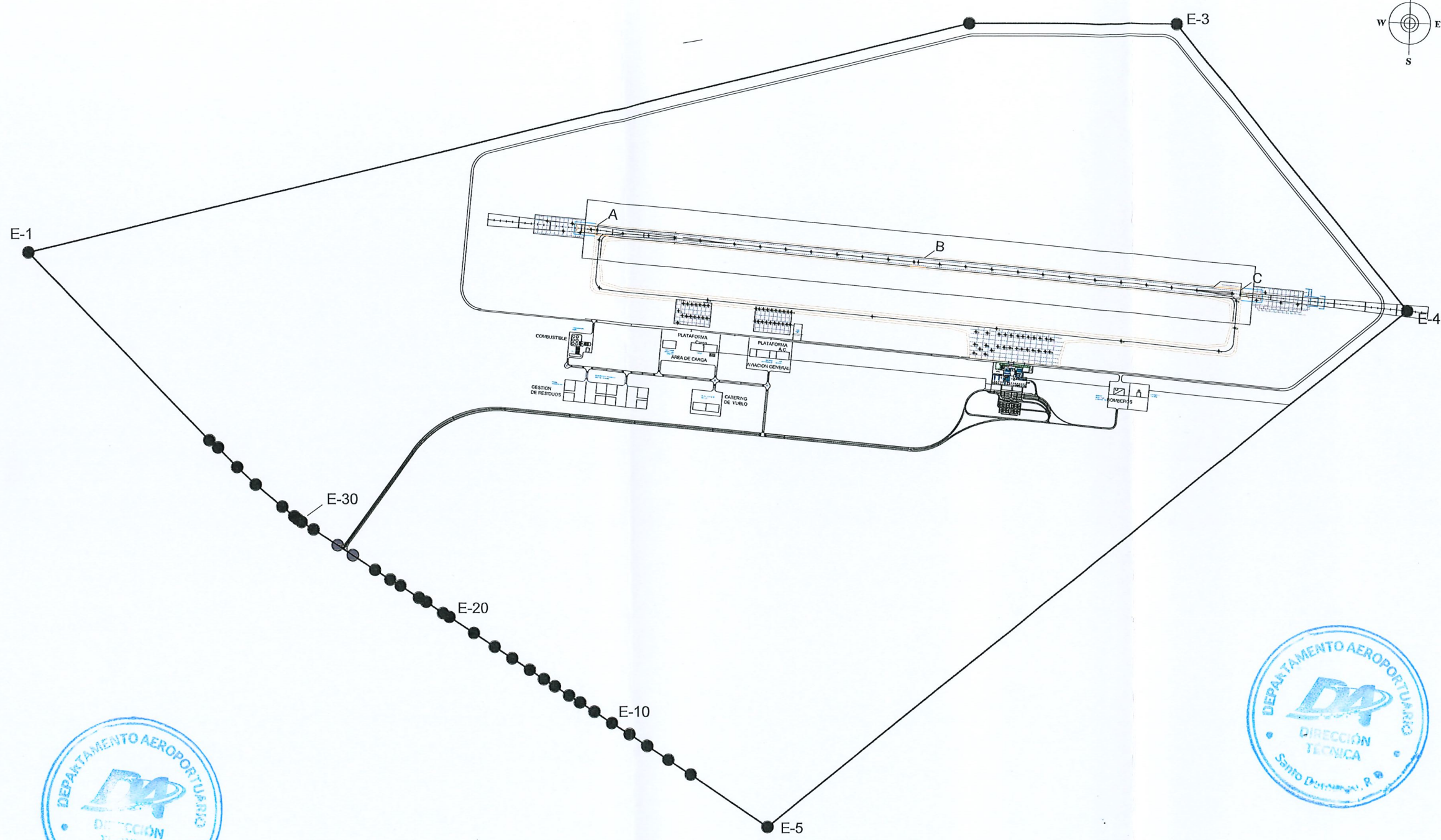




ANEXO II: Planta de ubicación de las exploraciones

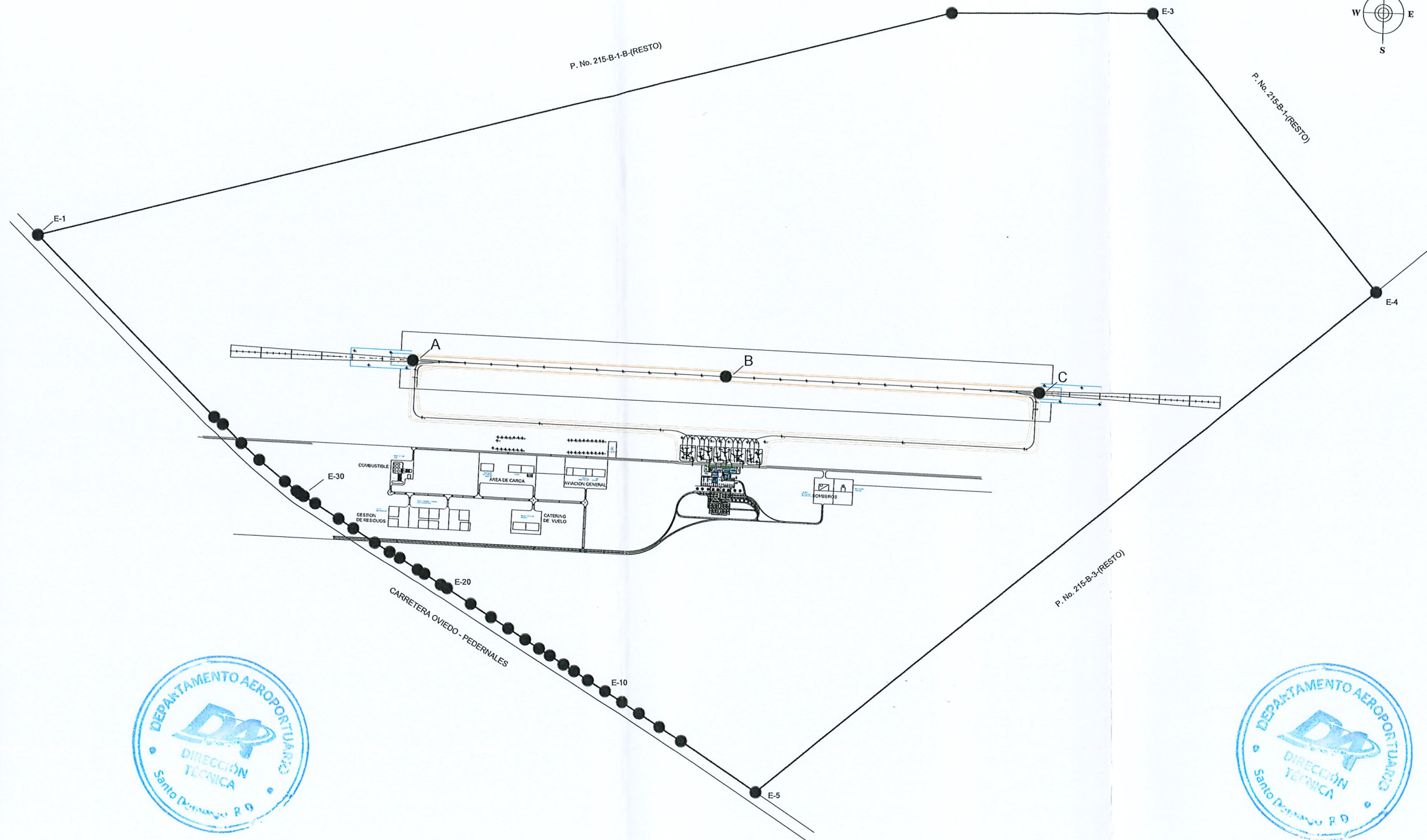
1	1973630.63	243389.859	80	Pista
4	1973615.29	243543.094	80	Pista
7	1973602.94	243666.477	90	Pista
10	1973590.95	243789.86	105	Pista
13	1973578.24	243913.244	105	Pista
16	1973561.78	244077.755	105	Pista
19	1973549.42	244201.139	110	Pista
22	1973537.07	244324.522	115	Pista
25	1973524.72	244447.905	110	Pista
28	1973512.37	244571.289	105	Pista
31	1973500.02	244694.672	105	Pista
34	1973487.67	244818.056	100	Pista
37	1973475.32	244941.439	100	Pista
40	1973462.97	245064.822	100	Pista
43	1973450.62	245188.206	97	Pista
46	1973438.27	245311.589	115	Pista
49	1973425.92	245434.973	115	Pista
52	1973413.57	245558.356	110	Pista
55	1973401.22	245681.74	110	Pista
58	1973388.87	245805.123	110	Pista
61	1973376.52	245928.506	110	Pista
64	1973364.17	246051.89	110	Pista
67	1973351.82	246175.273	110	Pista
70	1973339.47	246298.657	110	Pista
74	1973323	246463.168	105	Pista
78	1973307.45	243182.896	90	Zona_Seg
81	1973293.48	243258.514	82	Zona_Seg
84	1973279.5	243302.299	85	Zona_Seg
85	1973265.71	243338.116	85	Zona_Seg
87	1973251.02	245581.906	100	Zona_Seg
90	1973236.83	246231.691	100	Zona_Seg
93	1973222.64	246701.309	95	Zona_Seg
97	1973211.1	246780.911	95	Zona_Seg
100	1973200.88	246833.548	105	C_Rodaje
103	1973189.25	246474.938	100	C_Rodaje
106	1973048.96	246400.774	90	C_Rodaje
109	1973036.35	245927.576	95	C_Rodaje
112	1973155.85	245333.885	105	C_Rodaje
115	1973143.29	244723.796	90	C_Rodaje
118	1973131.59	243947.942	95	C_Rodaje
121	1973353.07	243428.203	75	C_Rodaje
124	1973581.14	243428.688	85	C_Rodaje
125	1973140.39	245236.464	100	Est_Anaves
128	1973080.69	245230.488	100	Est_Anaves
130	1973039.41	245226.242	95	Est_Anaves
135	1973058.27	245253.677	95	Est_Anaves
137	1973135.11	245289.184	100	Est_Anaves
140	1973075.41	245283.208	97	Est_Anaves
142	1973034.14	245278.961	95	Est_Anaves
147	1973052.68	245309.481	95	Est_Anaves
149	1973129.53	245344.917	100	Est_Anaves
152	1973069.83	245338.941	95	Est_Anaves
155	1973126.64	245373.842	100	Est_Anaves
158	1973066.94	245367.866	95	Est_Anaves
161	1973123.94	245400.84	100	Est_Anaves
164	1973064.23	245394.864	95	Est_Anaves
167	1973120.66	245433.544	100	Est_Anaves
170	1973060.57	245427.584	95	Est_Anaves
173	1973118.24	245457.717	100	Est_Anaves
176	1973058.15	245452.158	95	Est_Anaves
179	1973115.53	245484.846	100	Est_Anaves
182	1973065.44	245479.286	95	Est_Anaves
185	1973112.69	245513.146	100	Est_Anaves
188	1973052.6	245507.587	95	Est_Anaves
191	1973109.53	245542.947	95	Est_Anaves
194	1973049.83	245536.971	90	Est_Anaves
197	1973106.67	245573.35	95	Est_Anaves
200	1973046.58	245567.79	90	Est_Anaves
203	1973104.57	245594.257	90	Est_Anaves
206	1973044.48	245588.698	90	Est_Anaves
209	1973253.84	244381.419	90	Plat_AG
212	1973194.68	244175.488	90	Plat_AG
215	1973252.94	244196.962	90	Plat_AG
218	1973193.23	244189.976	90	Plat_AG
221	1973250.94	244215.853	90	Plat_AG
224	1973191.24	244209.877	85	Plat_AG
227	1973248.95	244235.754	90	Plat_AG
230	1973189.25	244229.718	85	Plat_AG
233	1973246.96	244255.654	90	Plat_AG
236	1973187.26	244249.678	85	Plat_AG
239	1973244.97	244275.555	90	Plat_AG
242	1973185.27	244269.579	85	Plat_AG
245	1973242.43	244295.395	85	Plat_AG
248	1973183.17	244309.474	85	Plat_AG
251	1973240.44	244315.296	85	Plat_AG
254	1973181.28	244309.374	85	Plat_AG
257	1973238.44	244335.196	90	Plat_AG
260	1973179.29	244329.275	85	Plat_AG
263	1973236.94	244359.213	90	Plat_AG
266	1973177.29	244344.292	90	Plat_AG
269	1973186.61	243802.151	90	Plat_Carga
272	1973243.06	243807.568	90	Plat_Carga
275	1973278.25	243831.19	90	Plat_Carga
278	1973220.62	243835.422	90	Plat_Carga
281	1973276.26	243851.091	90	Plat_Carga
284	1973218.63	243845.323	90	Plat_Carga
287	1973274.26	243870.991	90	Plat_Carga
290	1973216.64	243865.234	90	Plat_Carga
293	1973272.77	243890.892	90	Plat_Carga
296	1973244.65	243885.124	90	Plat_Carga
299	1973272.36	243911	90	Plat_Carga
302	1973212.65	243905.024	90	Plat_Carga
305	1973270.24	243932.14	90	Plat_Carga
308	1973210.66	243924.925	90	Plat_Carga
311	1973268.37	243950.801	95	Plat_Carga
314	1973268.67	243944.825	90	Plat_Carga



Legenda:
 ● Sondos
 □ Calicata

Nombre del proyecto: Aeropuerto Internacional de Cabo Rojo, Pedernales	Ubicación: Paraje Manuel Golla, Sección Tres Charcos, Municipio Ovieiro, Provincia Pedernales	Solicitante: Departamento Aeroportuario	Consultor Geotécnico:	Contenido: Planta de ubicación sondos según propuesta Ubicación I	Escala: 1:10,000	Fecha de presentación: 16/10/2023
---------------------------------------------------------------------------	--------------------------------------------------------------------------------------------------	--------------------------------------------	-----------------------	----------------------------------------------------------------------	---------------------	--------------------------------------

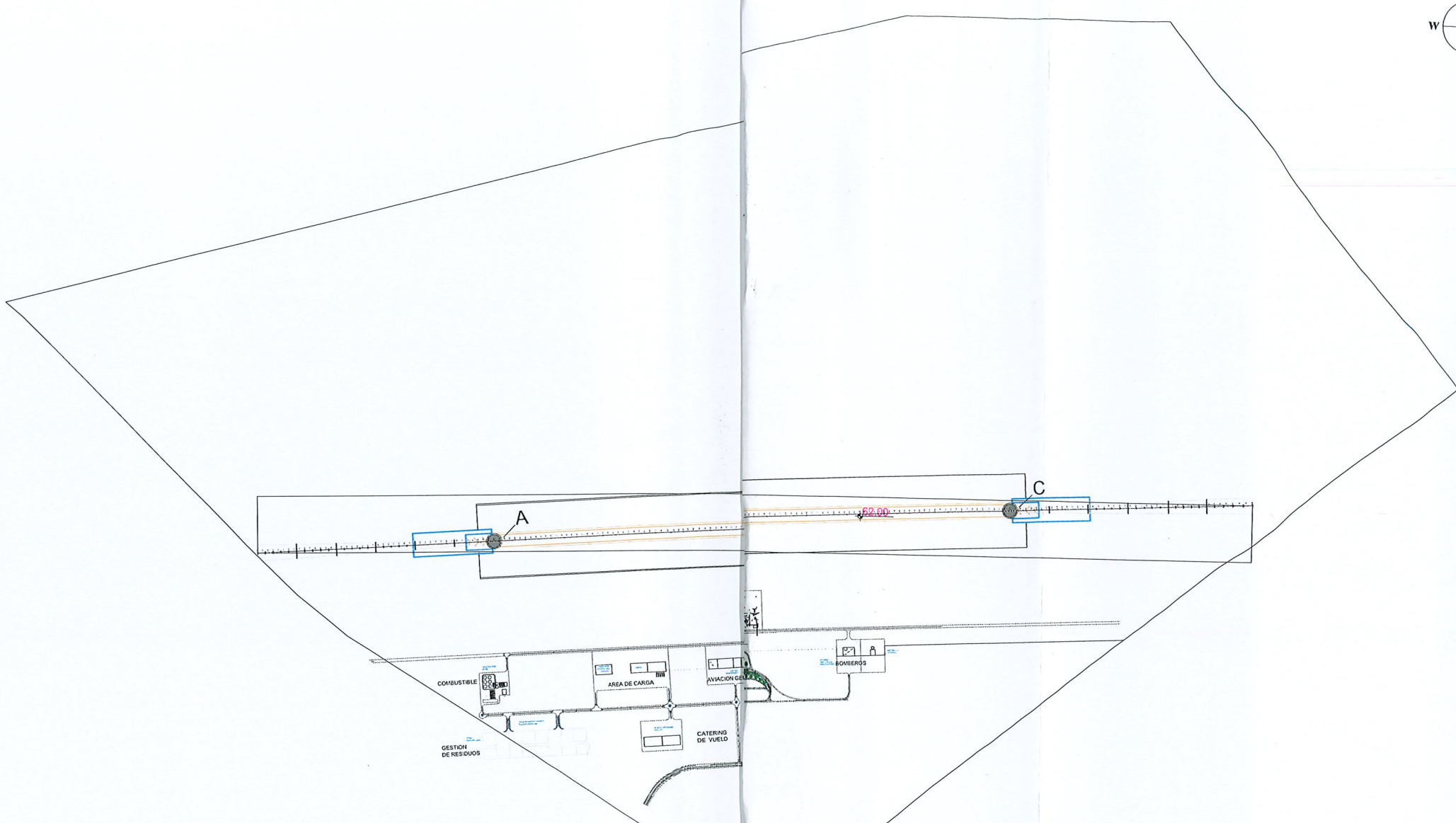
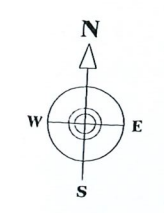
Coordenadas UTM 19 Norte				
Sondeo	Este (X)	Norte (Y)	Altitud (m)	Ubicación
2	242537.62	1972906.9	80	Pista
5	242667.44	1972900.06	80	Pista
8	242797.26	1972893.21	80	Pista
11	242927.08	1972886.37	80	Pista
14	243056.9	1972879.52	80	Pista
17	243186.72	1972872.68	80	Pista
20	243316.54	1972865.83	80	Pista
23	243446.36	1972858.98	80	Pista
26	243576.18	1972852.14	80	Pista
29	243706	1972845.29	80	Pista
32	243835.82	1972838.45	80	Pista
35	243965.64	1972831.6	80	Pista
38	244095.46	1972824.75	80	Pista
41	244225.28	1972817.91	80	Pista
44	244355.1	1972811.06	80	Pista
47	244484.92	1972804.22	80	Pista
50	244614.74	1972797.37	80	Pista
53	244744.56	1972790.52	80	Pista
56	244874.38	1972783.68	80	Pista
59	245004.2	1972776.83	80	Pista
62	245134.02	1972770.99	80	Pista
65	245263.84	1972764.14	80	Pista
68	245393.66	1972757.3	80	Pista
71	245523.48	1972750.45	80	Pista
72	245653.32	1972743.66	80	Pista
75	245783.14	1972736.83	80	Zona_Seg
77	245912.96	1972730.99	80	Zona_Seg
79	246042.78	1972724.14	80	Zona_Seg
82	246172.6	1972717.3	80	Zona_Seg
86	246302.42	1972710.45	80	Zona_Seg
88	246432.24	1972703.6	80	Zona_Seg
91	246562.06	1972696.75	80	Zona_Seg
98	246691.88	1972689.9	80	Zona_Seg
101	246821.7	1972683.05	80	C_Rodaje
104	246951.52	1972676.2	70	C_Rodaje
107	247081.34	1972669.35	60	C_Rodaje
110	247211.16	1972662.5	80	C_Rodaje
113	247340.98	1972655.65	70	C_Rodaje
116	247470.8	1972648.8	70	C_Rodaje
119	247600.62	1972641.95	70	C_Rodaje
122	247730.44	1972635.1	80	C_Rodaje
126	247860.26	1972628.25	70	Est_Anaves
129	247990.08	1972621.4	70	Est_Anaves
131	248119.9	1972614.55	70	Est_Anaves
136	248249.72	1972607.7	70	Est_Anaves
138	248379.54	1972600.85	70	Est_Anaves
141	248509.36	1972594.0	70	Est_Anaves
143	248639.18	1972587.15	70	Est_Anaves
148	248769.0	1972580.3	70	Est_Anaves
150	248898.82	1972573.45	70	Est_Anaves
153	249028.64	1972566.6	70	Est_Anaves
156	249158.46	1972559.75	70	Est_Anaves
159	249288.28	1972552.9	70	Est_Anaves
162	249418.1	1972546.05	70	Est_Anaves
165	249547.92	1972539.2	70	Est_Anaves
168	249677.74	1972532.35	70	Est_Anaves
171	249807.56	1972525.5	70	Est_Anaves
174	249937.38	1972518.65	70	Est_Anaves
177	250067.2	1972511.8	70	Est_Anaves
180	250197.02	1972505.0	70	Est_Anaves
183	250326.84	1972498.15	70	Est_Anaves
186	250456.66	1972491.3	70	Est_Anaves
189	250586.48	1972484.45	70	Est_Anaves
192	250716.3	1972477.6	70	Est_Anaves
195	250846.12	1972470.75	70	Est_Anaves
198	250975.94	1972463.9	70	Est_Anaves
201	251105.76	1972457.05	70	Est_Anaves
204	251235.58	1972450.2	70	Est_Anaves
207	251365.4	1972443.35	70	Est_Anaves
210	251495.22	1972436.5	70	Plat_AG
213	251625.04	1972429.65	70	Plat_AG
216	251754.86	1972422.8	70	Plat_AG
219	251884.68	1972415.95	70	Plat_AG
222	252014.5	1972409.1	70	Plat_AG
225	252144.32	1972402.25	70	Plat_AG
228	252274.14	1972395.4	70	Plat_AG
231	252403.96	1972388.55	70	Plat_AG
234	252533.78	1972381.7	70	Plat_AG
237	252663.6	1972374.85	70	Plat_AG
240	252793.42	1972368.0	70	Plat_AG
243	252923.24	1972361.15	70	Plat_AG
246	253053.06	1972354.3	70	Plat_AG
249	253182.88	1972347.45	70	Plat_AG
252	253312.7	1972340.6	70	Plat_AG
255	253442.52	1972333.75	70	Plat_AG
258	253572.34	1972326.9	70	Plat_AG
261	253702.16	1972320.05	70	Plat_AG
264	253831.98	1972313.2	70	Plat_AG
267	253961.8	1972306.35	70	Plat_AG
270	254091.62	1972299.5	70	Plat_Carga
273	254221.44	1972292.65	70	Plat_Carga
276	254351.26	1972285.8	70	Plat_Carga
279	254481.08	1972278.95	70	Plat_Carga
282	254610.9	1972272.1	70	Plat_Carga
285	254740.72	1972265.25	70	Plat_Carga
288	254870.54	1972258.4	70	Plat_Carga
291	255000.36	1972251.55	70	Plat_Carga
294	255130.18	1972244.7	70	Plat_Carga
297	255260.0	1972237.85	70	Plat_Carga
300	255389.82	1972231.0	70	Plat_Carga
303	255519.64	1972224.15	70	Plat_Carga
306	255649.46	1972217.3	70	Plat_Carga
309	255779.28	1972210.45	70	Plat_Carga
312	255909.1	1972203.6	70	Plat_Carga
315	256038.92	1972196.75	70	Plat_Carga



Leyenda:
 ⊕ Sondeo
 ☒ Calicata

Nombre del proyecto: Aeropuerto Internacional de Cabo Rojo, Pedernales	Ubicación: Paraje Manuel Góla, Sección Tres Charcos, Municipio Oviedo, Provincia Pedernales	Solicitante: Departamento Aeroportuario	Consultor Geotécnico:	Contenido: Planta de ubicación sondeos según propuesta Ubicación II	Escala: 1:10,000	Fecha de presentación: 16/10/2023
---------------------------------------------------------------------------	------------------------------------------------------------------------------------------------	--------------------------------------------	-----------------------	------------------------------------------------------------------------	---------------------	--------------------------------------

Coordenadas UTM 19 Norte				
Sondeo	Este (X)	Norte (Y)	Altitud (m)	Ubicación
3	1972702.97	242451.456	73	Pista
6	1972700.33	242501.387	73	Pista
9	1972697.7	242551.317	73	Pista
12	1972695.06	242601.247	73	Pista
15	1972692.42	242651.178	73	Pista
18	1972689.78	242701.108	73	Pista
21	1972687.15	242751.039	80	Pista
24	1972684.51	242800.969	80	Pista
27	1972681.87	242850.899	80	Pista
30	1972679.23	242900.829	80	Pista
33	1972676.6	242950.76	80	Pista
36	1972673.96	243000.691	80	Pista
39	1972671.32	243050.621	80	Pista
42	1972668.68	243100.551	80	Pista
45	1972666.05	243150.482	80	Pista
48	1972663.41	243200.412	80	Pista
51	1972660.77	243250.342	80	Pista
54	1972658.13	243300.273	80	Pista
57	1972655.5	243350.203	80	Pista
60	1972652.86	243400.134	80	Pista
63	1972650.22	243450.064	80	Pista
66	1972647.58	243499.994	80	Pista
69	1972644.95	243549.925	80	Pista
73	1972642.31	243599.855	80	Pista
76	1972639.67	243649.786	80	Pista
80	1972637.03	243699.716	80	Pista
83	1972634.4	243749.646	80	Pista
89	1972631.76	243799.577	80	Pista
92	1972629.12	243849.507	80	Pista
94	1972626.48	243899.438	80	Pista
95	1972623.85	243949.368	80	Pista
96	1972621.21	243999.298	70	Pista
99	1972618.57	244049.229	70	Pista
102	1972615.93	244099.159	70	Pista
105	1972613.3	244149.089	70	Pista
108	1972610.66	244199.02	70	Pista
111	1972608.02	244248.95	70	Pista
114	1972605.38	244298.881	70	Pista
117	1972602.75	244348.811	70	Pista
120	1972600.11	244398.741	70	Pista
123	1972597.47	244448.672	70	Pista
127	1972594.83	244498.602	70	Pista
132	1972592.2	244548.533	70	Pista
133	1972589.56	244598.463	70	Pista
134	1972586.92	244648.393	70	Pista
139	1972584.28	244698.324	70	Pista
144	1972581.65	244748.254	70	Pista
145	1972579.01	244798.185	70	Pista
146	1972576.37	244848.115	70	Pista
151	1972573.73	244898.045	70	Pista
154	1972571.1	244947.976	70	Pista
157	1972568.46	244997.906	70	Pista
160	1972565.82	245047.836	70	Pista
163	1972563.18	245097.767	70	Pista
166	1972560.55	245147.697	70	Pista
169	1972557.91	245197.628	70	Pista
172	1972555.27	245247.558	70	Pista
175	1972552.63	245297.488	70	Pista
178	1972550	245347.419	70	Pista
181	1972547.36	245397.349	70	Pista
184	1972544.72	245447.28	70	Pista
187	1972542.08	245497.21	70	Pista
190	1972539.44	245547.141	70	Zona Seg
193	1972536.8	245597.071	70	Zona Seg
196	1972534.16	245647.002	70	Zona Seg
199	1972531.52	245696.932	70	Zona Seg
202	1972528.88	245746.863	70	Zona Seg
205	1972526.24	245796.793	70	Zona Seg
208	1972523.6	245846.724	70	Zona Seg
211	1972520.96	245896.654	75	Zona Seg
214	1972518.32	245946.585	75	Zona Seg
217	1972515.68	245996.515	75	Zona Seg
220	1972513.04	246046.446	75	Zona Seg
223	1972510.4	246096.376	70	Zona Seg
226	1972507.76	246146.307	70	C Rodaje
229	1972505.12	246196.237	65	C Rodaje
232	1972502.48	246246.168	65	C Rodaje
235	1972499.84	246296.098	60	C Rodaje
238	1972497.2	246346.029	60	C Rodaje
241	1972494.56	246395.959	65	Est. Anaves
244	1972491.92	246445.89	65	Est. Anaves
247	1972489.28	246495.82	65	Est. Anaves
250	1972486.64	246545.752	65	Est. Anaves
253	1972484	246595.682	65	Est. Anaves
256	1972481.36	246645.613	65	Est. Anaves
259	1972478.72	246695.543	60	Est. Anaves
262	1972476.08	246745.474	65	Est. Anaves
265	1972473.44	246795.404	65	Est. Anaves
268	1972470.8	246845.335	65	Est. Anaves
271	1972468.16	246895.265	60	Est. Anaves
274	1972465.52	246945.196	60	Est. Anaves
277	1972462.88	246995.126	60	Est. Anaves
280	1972460.24	247045.057	60	Est. Anaves
283	1972457.6	247094.987	60	Est. Anaves
286	1972454.96	247144.918	65	Est. Anaves
289	1972452.32	247194.848	60	Est. Anaves
292	1972449.68	247244.779	60	Est. Anaves
295	1972447.04	247294.709	60	Est. Anaves
298	1972444.4	247344.639	60	Est. Anaves
301	1972441.76	247394.57	60	Est. Anaves
304	1972439.12	247444.501	65	Est. Anaves
307	1972436.48	247494.431	60	Est. Anaves
310	1972433.84	247544.362	60	Est. Anaves
313	1972431.2	247594.292	60	Est. Anaves
316	1972428.56	247644.223	60	Est. Anaves



Leyenda:
 Sondéo
 Calicata

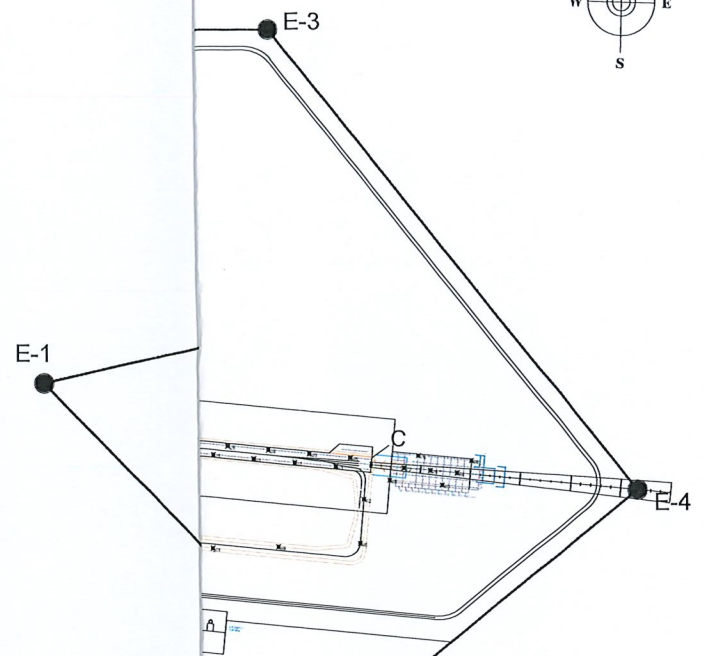
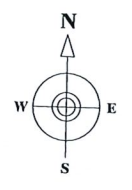
Nombre del proyecto: Aeropuerto Internacional de Cabo Rojo, Pedernales	Ubicación: Paraje Manuel Golla, Sección Tres Charcos, Municipio Ovierdo, Provincia Pedernales	Solicitante: Departamento Aeroportuario	Consultor Geotécnico:	No de Ubicación III	Escala: 1:10,000	Fecha de presentación: 16/10/2023
---------------------------------------------------------------------------	--------------------------------------------------------------------------------------------------	--------------------------------------------	-----------------------	---------------------	---------------------	--------------------------------------

Coordenadas UTM 19 Norte				Ubicación
Calicata	Este [X]	Norte [Y]	Altitud [m]	
3	242412.29	197219.86	75	Pista
6	242541.585	1972682.66	75	Pista
9	242584.473	1972710.59	75	Pista
12	242665.406	1972676.19	75	Pista
15	242708.293	1972703.92	75	Pista
18	242789.226	1972699.52	75	Pista
21	242832.114	1972697.25	75	Pista
24	242913.047	1972662.84	75	Pista
27	242965.934	1972690.58	75	Pista
30	243036.867	1972656.17	75	Pista
33	243079.755	1972683.91	75	Pista
36	243160.687	1972649.5	75	Pista
39	243203.575	1972677.23	75	Pista
42	243284.508	1972642.83	75	Pista
45	243327.395	1972670.56	75	Pista
48	243408.328	1972636.16	75	Pista
51	243451.216	1972663.89	75	Pista
54	243532.149	1972629.49	75	Pista
57	243575.036	1972657.22	75	Pista
60	243655.969	1972622.82	75	Pista
63	243698.857	1972650.55	75	Pista
66	243779.789	1972616.14	70	Pista
69	243822.677	1972643.88	70	Pista
72	243903.61	1972629.47	70	Pista
75	243946.497	1972637.21	70	Pista
78	244027.43	1972602.8	70	Pista
81	244070.318	1972630.53	70	Pista
84	244151.251	1972696.13	70	Pista
87	244194.138	1972613.86	70	Pista
90	244275.071	1972589.46	70	Pista
93	244317.959	1972617.19	70	Pista
96	244398.892	1972582.79	70	Pista
99	244441.779	1972610.52	70	Pista
102	244522.712	1972576.12	70	Pista
105	244565.599	1972608.85	65	Pista
108	244646.532	1972569.45	65	Pista
111	244689.42	1972597.18	65	Pista
114	244770.353	1972562.77	65	Pista
117	244813.24	1972590.51	65	Pista
121	244894.173	1972561	65	Pista
124	244895.787	1972586.06	65	Pista
127	244976.72	1972551.05	65	Pista
130	245059.267	1972547.21	65	Pista
133	245102.155	1972574.94	65	Pista
136	245183.087	1972540.54	75	Pista
139	245225.975	1972568.27	70	Pista
142	245306.908	1972533.86	70	Pista
145	245349.795	1972561.6	70	Pista
149	245430.728	1972527.19	70	Pista
152	245473.616	1972554.93	75	Pista
154	245554.549	1972679.47	75	Zona Seg.
158	245635.482	1972712.26	75	Zona Seg.
161	245716.415	1972755.05	75	Zona Seg.
164	245797.348	1972797.84	75	Zona Seg.
167	245878.281	1972840.63	75	Zona Seg.
170	245959.214	1972883.42	75	Zona Seg.
173	246040.147	1972926.21	75	Zona Seg.
175	246121.08	1972969.01	70	Zona Seg.
179	246202.013	1973011.81	75	Zona Seg.
182	246282.946	1973054.61	75	Zona Seg.
185	246363.879	1973097.41	75	Zona Seg.
187	246444.812	1973140.21	70	Zona Seg.
190	246525.745	1973183.01	70	Zona Seg.
193	246606.678	1973225.81	75	Zona Seg.
196	246687.611	1973268.61	70	C. Rodaje
199	246768.544	1973311.41	70	C. Rodaje
202	246849.477	1973354.21	65	C. Rodaje
205	246930.41	1973397.01	65	C. Rodaje
207	247011.344	1973439.81	60	C. Rodaje
209	247092.277	1973482.61	60	Est. Anaves
212	247173.21	1973525.41	60	Est. Anaves
215	247254.144	1973568.21	65	Est. Anaves
218	247335.077	1973611.01	65	Est. Anaves
221	247416.01	1973653.81	60	Est. Anaves
224	247496.943	1973696.61	60	Est. Anaves
227	247577.876	1973739.41	60	Est. Anaves
230	247658.809	1973782.21	65	Est. Anaves
234	247739.742	1973825.01	65	Est. Anaves
237	247820.675	1973867.81	65	Est. Anaves
239	247901.608	1973910.61	65	Est. Anaves
241	247982.541	1973953.41	65	Est. Anaves
245	248063.474	1973996.21	65	Est. Anaves
247	248144.407	1974039.01	65	Est. Anaves
250	248225.34	1974081.81	65	Est. Anaves
253	248306.273	1974124.61	65	Est. Anaves
255	248387.206	1974167.41	65	Est. Anaves
257	248468.139	1974210.21	65	Est. Anaves
261	248549.072	1974253.01	60	Est. Anaves
263	248630.005	1974295.81	60	Est. Anaves
266	248710.938	1974338.61	65	Est. Anaves
269	248791.871	1974381.41	65	Est. Anaves
271	248872.804	1974424.21	60	Est. Anaves
273	248953.737	1974467.01	60	Est. Anaves
277	249034.67	1974509.81	60	Est. Anaves
279	249115.603	1974552.61	60	Est. Anaves
282	249196.536	1974595.41	60	Est. Anaves
285	249277.469	1974638.21	60	Est. Anaves
288	249358.402	1974681.01	60	Est. Anaves
292	249439.335	1974723.81	60	Est. Anaves
296	249520.268	1974766.61	60	Est. Anaves
300	249601.201	1974809.41	60	Est. Anaves
303	249682.134	1974852.21	60	Est. Anaves
307	249763.067	1974895.01	60	Est. Anaves
311	249844.001	1974937.81	60	Est. Anaves
315	249924.934	1974980.61	60	Est. Anaves
318	250005.867	1975023.41	60	Est. Anaves

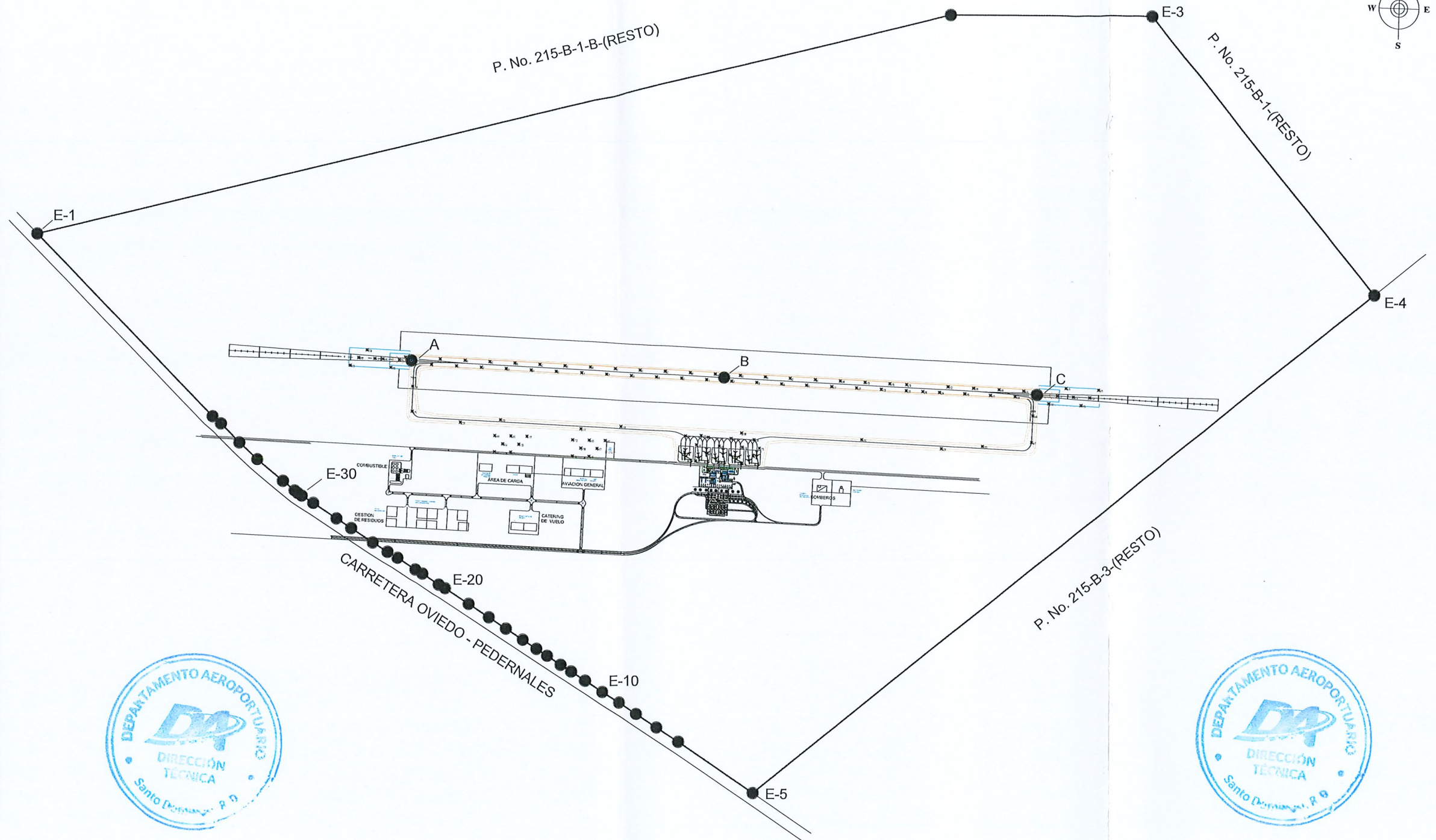
Leyenda:
 Sondes
 Calicata

Nombre del proyecto: Aeropuerto Internacional de Cabo Rojo, Pedernales

Ubicación: Paraje Manuel Góla, S...



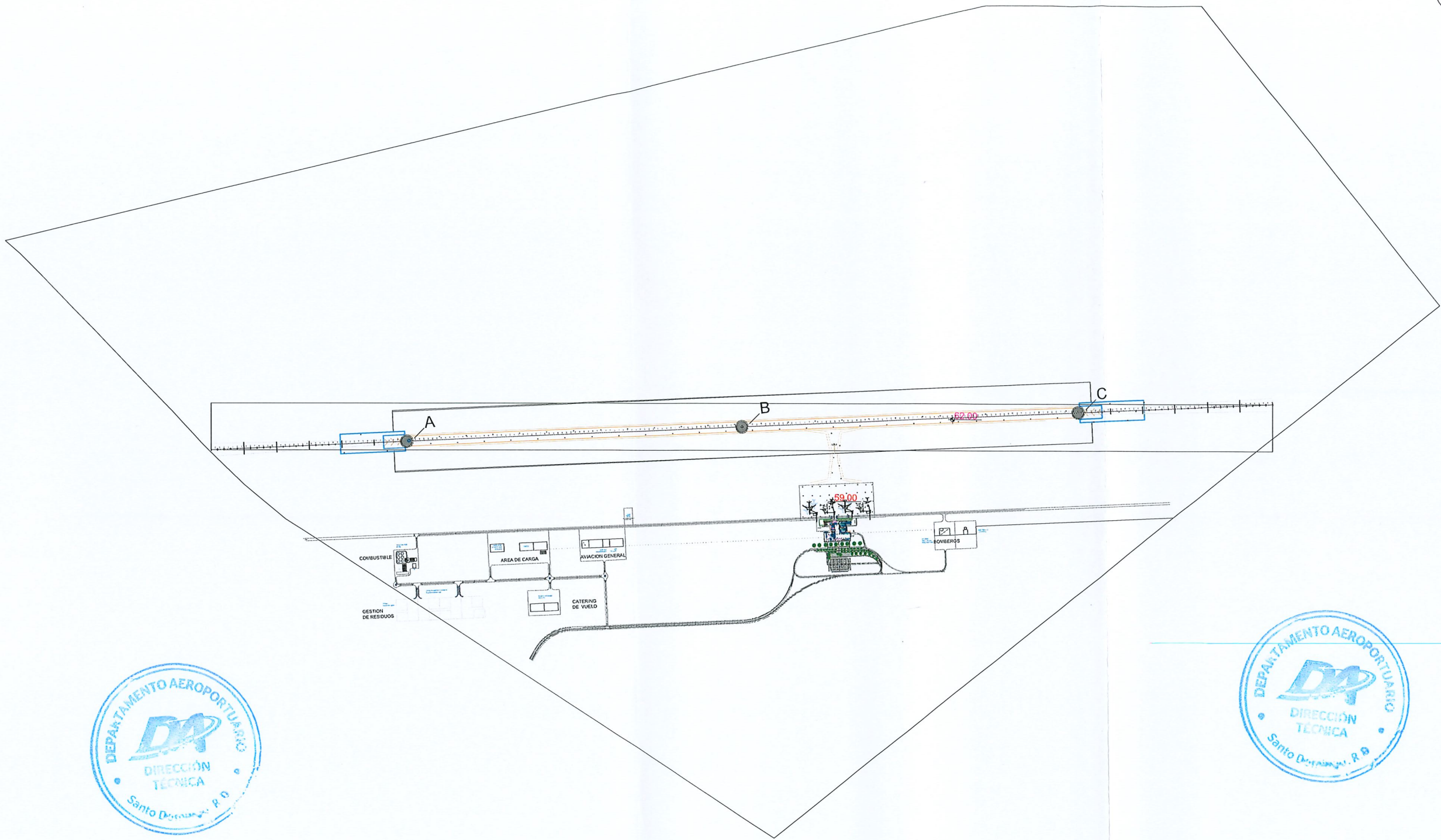
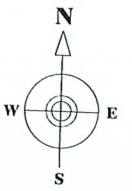
Coordenadas UTM 19 Norte				
Calicata	Este (X)	Norte (Y)	Altitud (m)	Ubicación
2	24297.485	197293.52	80	Pista
5	24256.723	197286.66	80	Pista
8	242679.579	1972914.44	80	Pista
11	242760.551	1972880.13	80	Pista
14	242803.406	1972907.91	75	Pista
17	242884.379	1972873.6	75	Pista
20	24297.234	1972901.38	75	Pista
23	243008.207	1972867.07	75	Pista
26	243051.062	1972894.85	75	Pista
29	243132.034	1972860.54	80	Pista
32	243174.89	1972888.32	80	Pista
35	24325.862	1972854.01	80	Pista
38	24328.718	1972881.79	80	Pista
41	243378.69	1972847.48	80	Pista
44	243422.546	1972875.26	80	Pista
47	243503.518	1972840.95	75	Pista
50	243546.374	1972868.73	75	Pista
53	243627.346	1972834.42	75	Pista
56	24370.202	1972852.2	75	Pista
59	243751.174	1972827.89	75	Pista
62	243794.03	1972855.67	75	Pista
65	243875.002	1972831.36	75	Pista
68	243917.858	1972849.14	75	Pista
71	243988.83	1972814.83	75	Pista
74	244041.696	1972842.61	70	Pista
77	244122.668	1972808.3	70	Pista
80	244165.514	1972836.08	70	Pista
83	244246.486	1972801.77	70	Pista
86	244289.342	1972829.55	75	Pista
89	244370.314	1972795.24	80	Pista
92	244413.17	1972823.02	80	Pista
95	244494.142	1972788.71	75	Pista
98	244536.998	1972816.49	80	Pista
101	244617.97	1972782.18	70	Pista
104	244660.826	1972809.96	70	Pista
107	244741.798	1972755.65	70	Pista
110	244784.654	1972803.43	70	Pista
113	244865.626	1972769.12	75	Pista
116	244908.482	1972796.9	75	Pista
120	244989.454	1972762.59	75	Pista
123	244991.083	1972792.55	75	Pista
126	245072.056	1972758.24	70	Pista
129	245154.558	1972753.88	75	Pista
132	245197.413	1972781.66	80	Pista
135	245278.386	1972747.35	80	Pista
138	245321.241	1972775.13	85	Pista
141	245402.213	1972740.82	80	Pista
144	245445.069	1972768.6	80	Pista
148	245526.041	1972734.29	75	Pista
150	245568.897	1972762.08	80	Pista
153	242234.963	1972882.81	80	Zona_Seg
156	242277.084	1972920.65	80	Zona_Seg
159	242319.065	1972958.49	80	Zona_Seg
163	242356.903	1972916.43	80	Zona_Seg
165	242396.848	1972914.33	80	Zona_Seg
169	242434.686	1972872.28	80	Zona_Seg
171	242476.737	1972910.12	80	Zona_Seg
174	242560.162	1972700.6	80	Zona_Seg
177	242732.213	1972738.44	85	Zona_Seg
181	242774.264	1972776.28	80	Zona_Seg
183	242812.102	1972734.23	80	Zona_Seg
186	242849.94	1972692.18	75	Zona_Seg
189	242891.991	1972730.02	80	Zona_Seg
191	242924.042	1972768.85	80	Zona_Seg
194	242951.545	1972640.74	80	C. Rodaje
197	242977.538	1972509.76	70	C. Rodaje
200	243003.593	1972489.5	70	C. Rodaje
203	243029.648	1972469.24	70	C. Rodaje
206	243055.703	1972449.0	70	C. Rodaje
209	243081.758	1972428.76	65	C. Rodaje
211	243097.813	1972408.52	70	C. Rodaje
214	243123.868	1972388.28	75	C. Rodaje
217	243149.923	1972368.04	75	C. Rodaje
220	243175.978	1972347.80	75	C. Rodaje
223	243202.033	1972327.56	75	C. Rodaje
226	243228.088	1972307.32	75	C. Rodaje
229	243254.143	1972287.08	80	C. Rodaje
232	243280.198	1972266.84	65	Est. Anaves
235	243306.253	1972246.60	70	Est. Anaves
238	243332.308	1972226.36	70	Est. Anaves
241	243358.363	1972206.12	65	Est. Anaves
243	243384.418	1972185.88	70	Est. Anaves
246	243410.473	1972165.64	65	Est. Anaves
248	243436.528	1972145.40	70	Est. Anaves
252	243462.583	1972125.16	65	Est. Anaves
254	243488.638	1972104.92	65	Est. Anaves
256	243514.693	1972084.68	65	Est. Anaves
259	243540.748	1972064.44	65	Est. Anaves
262	243566.803	1972044.20	65	Est. Anaves
264	243592.858	1972023.96	65	Est. Anaves
268	243618.913	1972003.72	65	Est. Anaves
270	243644.968	1971983.48	60	Est. Anaves
272	243671.023	1971963.24	75	Plat. AG
275	243697.078	1971943.00	70	Plat. AG
278	243723.133	1971922.76	75	Plat. AG
280	243749.188	1971902.52	75	Plat. AG
284	243775.243	1971882.28	70	Plat. AG
287	243801.298	1971862.04	70	Plat. AG
290	243827.353	1971841.80	70	Plat. AG
294	243853.408	1971821.56	70	Plat. Carga
298	243879.463	1971801.32	70	Plat. Carga
302	243905.518	1971781.08	70	Plat. Carga
305	243931.573	1971760.84	70	Plat. Carga
309	243957.628	1971740.60	70	Plat. Carga
313	243983.683	1971720.36	70	Plat. Carga
317	244009.738	1971700.12	75	Plat. Carga



Leyenda:
 Sondro
 Calcata

Nombre del proyecto: Aeropuerto Internacional de Cabo Rojo, Pedernales	Ubicación: Paraje Manuel Golla, Sección Tres Charcos, Municipio Oviedo, Provincia Pedernales	Solicitante: Departamento Aeroportuario	Consultor Geotécnico:	Contenido: Planta de ubicación calcatas según propuesta Ubicación II	Escala: 1:10,000	Fecha de presentación: 16/10/2023
---------------------------------------------------------------------------	-------------------------------------------------------------------------------------------------	--------------------------------------------	-----------------------	-------------------------------------------------------------------------	---------------------	--------------------------------------

Coordenadas UTM 19 Norte				
Calicata	Este [X]	Norte [Y]	Altitud (m)	Ubicación
3	242412.39	1972719.86	75	Pista
6	242541.585	1972682.86	75	Pista
9	242584.473	1972710.59	75	Pista
12	242665.406	1972676.19	75	Pista
15	242708.293	1972703.92	75	Pista
18	242789.226	1972669.52	75	Pista
21	242832.114	1972697.25	75	Pista
24	242913.047	1972662.84	75	Pista
27	242955.934	1972690.58	75	Pista
30	243036.867	1972656.17	75	Pista
33	243079.755	1972683.91	75	Pista
36	243160.687	1972649.5	75	Pista
39	243203.575	1972677.23	75	Pista
42	243284.508	1972642.83	75	Pista
45	243327.395	1972670.56	75	Pista
48	243408.328	1972636.16	75	Pista
51	243451.216	1972663.89	75	Pista
54	243532.149	1972628.49	75	Pista
57	243575.036	1972657.22	75	Pista
60	243655.969	1972722.82	75	Pista
63	243698.857	1972650.55	75	Pista
66	243779.788	1972616.14	70	Pista
69	243822.677	1972643.88	70	Pista
72	243903.61	1972609.47	70	Pista
75	243946.497	1972637.21	70	Pista
78	244027.43	1972602.8	70	Pista
81	244070.318	1972630.53	70	Pista
84	244151.251	1972596.13	70	Pista
87	244194.138	1972623.86	70	Pista
90	244275.071	1972589.46	70	Pista
93	244317.959	1972611.19	70	Pista
96	244398.892	1972582.79	70	Pista
99	244441.779	1972610.52	70	Pista
102	244522.712	1972576.12	70	Pista
105	244565.599	1972603.85	65	Pista
108	244646.532	1972569.45	65	Pista
111	244689.42	1972597.18	65	Pista
114	244770.353	1972562.77	65	Pista
117	244813.24	1972590.51	65	Pista
121	244894.173	1972556.1	65	Pista
124	244937.06	1972582.66	65	Pista
127	244979.947	1972558.21	65	Pista
130	245060.88	1972523.76	65	Pista
133	245102.767	1972574.94	65	Pista
136	245183.7	1972540.54	75	Pista
139	245225.585	1972568.27	70	Pista
142	245306.518	1972533.86	70	Pista
145	245349.405	1972561.6	70	Pista
149	245430.338	1972527.19	70	Pista
152	245473.225	1972554.93	75	Pista
154	242139.822	1972679.47	75	Zona_Seg
158	242181.709	1972717.26	75	Zona_Seg
161	242224.596	1972755.05	75	Zona_Seg
164	242267.483	1972788.84	75	Zona_Seg
167	242310.37	1972826.63	75	Zona_Seg
170	242353.257	1972864.42	75	Zona_Seg
173	242396.144	1972902.21	75	Zona_Seg
175	242439.031	1972939.99	75	Zona_Seg
179	242481.918	1972977.78	75	Zona_Seg
182	242524.805	1973015.57	75	Zona_Seg
185	242567.692	1973053.36	75	Zona_Seg
187	242610.579	1973091.15	70	Zona_Seg
190	242653.466	1973128.94	70	Zona_Seg
193	242696.353	1973166.73	70	Zona_Seg
196	242739.24	1973204.52	70	C_Rodaje
199	242782.127	1973242.31	70	C_Rodaje
202	242825.014	1973280.1	65	C_Rodaje
205	242867.901	1973317.89	65	C_Rodaje
207	242910.788	1973355.68	60	C_Rodaje
209	242953.675	1973393.47	60	Est_Anaves
212	243034.608	1973431.26	60	Est_Anaves
215	243115.541	1973469.05	65	Est_Anaves
218	243196.474	1973506.84	65	Est_Anaves
221	243277.407	1973544.63	60	Est_Anaves
224	243358.34	1973582.42	60	Est_Anaves
227	243439.273	1973620.21	60	Est_Anaves
230	243520.206	1973658.0	65	Est_Anaves
234	243601.139	1973695.79	65	Est_Anaves
237	243682.072	1973733.58	65	Est_Anaves
239	243763.005	1973771.37	65	Est_Anaves
241	243843.938	1973809.16	65	Est_Anaves
245	243924.871	1973846.95	65	Est_Anaves
247	244005.804	1973884.74	65	Est_Anaves
250	244086.737	1973922.53	65	Est_Anaves
253	244167.67	1973960.32	65	Est_Anaves
255	244248.603	1973998.11	65	Est_Anaves
257	244329.536	1974035.9	65	Est_Anaves
261	244410.469	1974073.69	60	Est_Anaves
263	244491.402	1974111.48	60	Est_Anaves
266	244572.335	1974149.27	65	Est_Anaves
269	244653.268	1974187.06	65	Est_Anaves
271	244734.201	1974224.85	60	Est_Anaves
273	244815.134	1974262.64	60	Est_Anaves
277	244896.067	1974300.43	60	Est_Anaves
279	244977.000	1974338.22	60	Est_Anaves
282	245057.933	1974376.01	60	Est_Anaves
285	245138.866	1974413.8	60	Est_Anaves
288	245219.799	1974451.59	60	Est_Anaves
291	245300.732	1974489.38	60	Est_Anaves
296	245381.665	1974527.17	60	Est_Anaves
300	245462.598	1974564.96	60	Est_Anaves
303	245543.531	1974602.75	60	Est_Anaves
307	245624.464	1974640.54	60	Est_Anaves
311	245705.397	1974678.33	60	Est_Anaves
315	245786.33	1974716.12	60	Est_Anaves
318	245867.263	1974753.91	60	Est_Anaves



Leyenda:
 Sondéo
 Calicata

Nombre del proyecto: Aeropuerto Internacional de Cabo Rojo, Pedernales	Ubicación: Paraje Manuel Golla, Sección Tres Charcos, Municipio Ovierdo, Provincia Pedernales	Solicitante: Departamento Aeroportuario	Consultor Geotécnico:	Contenido: Planta de ubicación calicatas según propuesta de diseño de Ubicación III	Escala: 1:10,000	Fecha de presentación: 16/10/2023
---------------------------------------------------------------------------	--------------------------------------------------------------------------------------------------	--------------------------------------------	-----------------------	----------------------------------------------------------------------------------------	---------------------	--------------------------------------