

PUNTOS DE CONTROLES				
PUNTO #	NORTE	ESTE	ELEVACION	DESCRIPCION
1	1971786.07	243361.87	62.33	ACR-01
2	1972438.94	246292.90	60.49	ACR-02
3	1973222.97	242141.58	85.26	ACR-03
4	1973949.83	244296.50	110.54	ACR-04

PROYECCION UTM, ZONA 19 NORTE				
EST.	X	Y	RUMBOS	DIST.
1	240,688.66	1,973,527.63	N 76° 32' E	4,650.09
2	245,211.05	1,974,609.92	S 90° 00' E	994.46
3	246,205.51	1,974,609.92	S 38° 38' E	1,754.92
4	247,301.35	1,973,239.20	S 51° 22' W	3,935.73
5	244,227.25	1,970,781.57	N 55° 36' W	446.63
6	243,858.69	1,971,033.86	N 57° 16' W	127.84
7	243,751.16	1,971,102.98	N 57° 09' W	120.49
8	243,640.94	1,971,168.34	N 57° 01' W	100.81
9	243,565.38	1,971,223.23	N 56° 51' W	100.64
10	243,481.12	1,971,278.26	N 57° 03' W	101.25
11	243,396.16	1,971,333.33	N 56° 53' W	80.88
12	243,328.41	1,971,377.51	N 57° 18' W	60.70
13	243,277.32	1,971,410.30	N 56° 50' W	80.73
14	243,209.74	1,971,454.46	N 57° 09' W	62.38
15	243,157.34	1,971,488.30	N 56° 50' W	80.70
16	243,089.80	1,971,532.45	N 56° 45' W	100.01
17	243,006.17	1,971,587.30	N 56° 57' W	101.05
18	242,921.47	1,971,642.41	N 56° 54' W	120.02
19	242,820.92	1,971,707.95	N 56° 52' W	140.96
20	242,702.89	1,971,785.01	N 60° 07' W	35.87

PROYECCION UTM, ZONA 19 NORTE				
EST.	X	Y	RUMBOS	DIST.
21	242,671.78	1,971,802.88	N 56° 00' W	96.97
22	242,591.38	1,971,857.10	N 60° 24' W	40.32
23	242,556.32	1,971,877.02	N 56° 59' W	105.48
24	242,467.88	1,971,934.49	N 59° 34' W	57.02
25	242,418.71	1,971,963.38	N 57° 42' W	86.14
26	242,345.91	1,972,009.40	N 56° 30' W	127.53
27	242,239.55	1,972,079.78	N 56° 32' W	86.63
28	242,167.28	1,972,127.55	N 56° 45' W	137.72
29	242,052.11	1,972,203.06	N 57° 36' W	67.39
30	241,995.21	1,972,239.16	N 56° 53' W	23.00
31	241,975.94	1,972,251.73	N 51° 01' W	21.20
32	241,959.47	1,972,265.06	N 50° 17' W	73.91
33	241,902.62	1,972,312.30	N 50° 04' W	164.92
34	241,776.18	1,972,418.18	N 46° 39' W	120.68
35	241,688.42	1,972,501.01	N 44° 08' W	130.07
36	241,597.86	1,972,594.37	N 49° 43' W	54.65
37	241,556.18	1,972,629.71	N 44° 01' W	1,248.54

PROYECTO

AEROPUERTO INTERNACIONAL CABO ROJO
UBICADO EN PROV. PEDERNALES,
REPUBLICA DOMINICANA

TECNICOS

- DISENO ARQUITECTONICO
CODIA:
- DISENO ESTRUCTURAL
CODIA:
- DISENO ELECTRICO
CODIA:
- DISENO MECANICO
CODIA:
- DISENO SANITARIO
CODIA:

COLABORADORES

DIBUJANTES

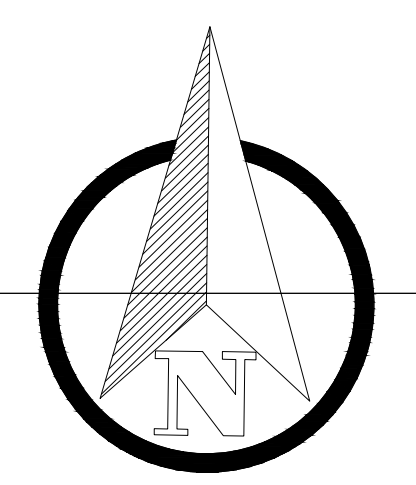
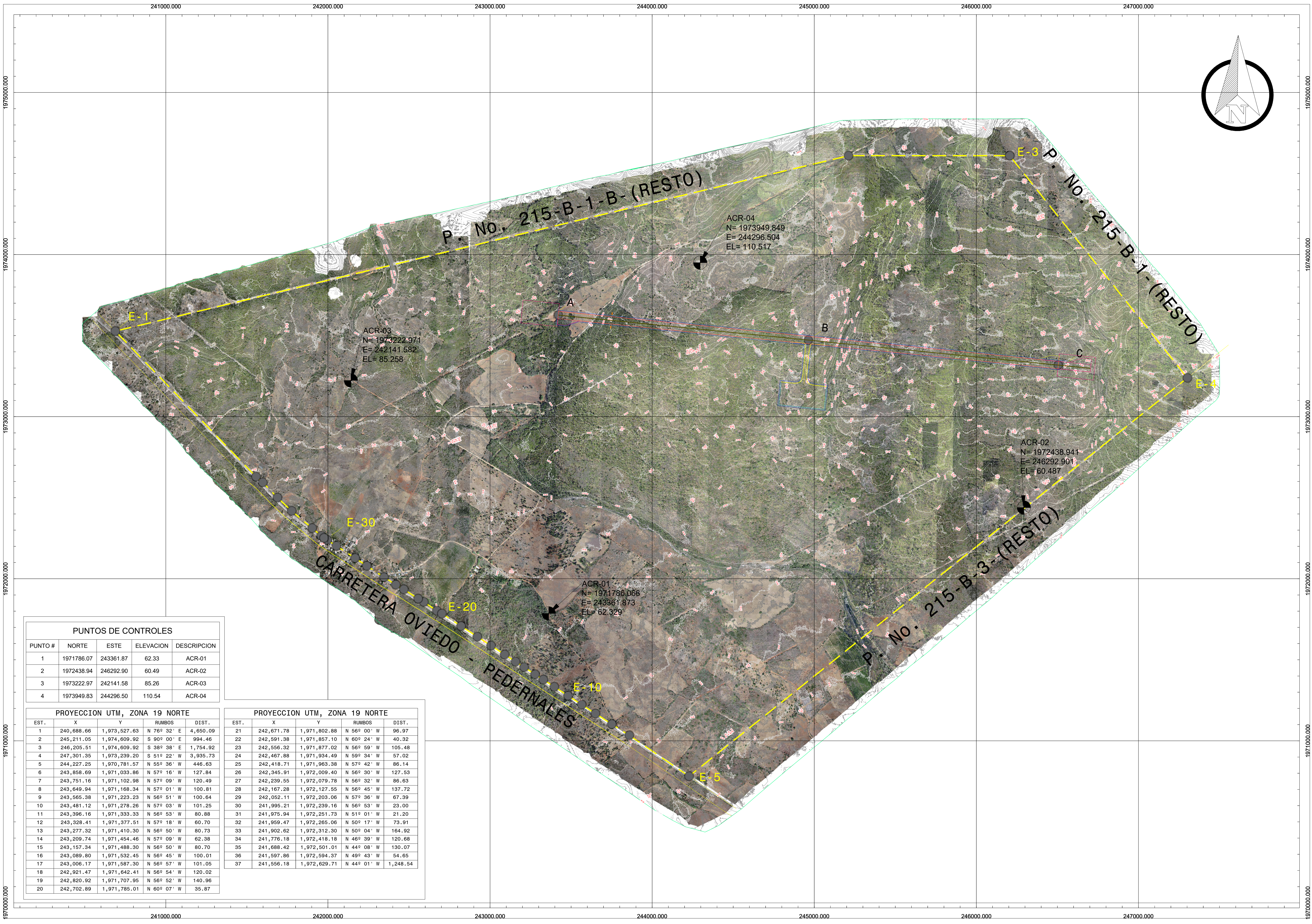
REVISION	FECHA	EMISION DE PLANO	APROBADO
1	30/02/23	EMISION DE PLANO	-

PROPIETARIO
AEROPUERTO INTERNACIONAL CABO ROJO

CONTENIDO



PLANO No. _____
HOJA No. _____ DE _____



PUNTOS DE CONTROLES

PUNTO #	NORTE	ESTE	ELEVACION	DESCRIPCION
1	1971786.07	243361.87	62.33	ACR-01
2	1972438.94	246292.90	60.49	ACR-02
3	1973222.97	242141.58	85.26	ACR-03
4	1973949.83	244296.50	110.54	ACR-04

PROYECCION UTM, ZONA 19 NORTE

EST.	X	Y	RUMBOS	DIST.
1	240,688.66	1,973,527.63	N 76° 32' E	4,650.09
2	245,211.05	1,974,609.92	S 90° 00' E	994.46
3	246,205.51	1,974,609.92	S 38° 38' E	1,754.92
4	247,301.35	1,973,239.20	S 51° 22' W	3,935.73
5	244,227.25	1,970,781.57	N 55° 36' W	446.63
6	243,858.69	1,971,033.86	N 57° 16' W	127.84
7	243,751.16	1,971,102.98	N 57° 09' W	120.49
8	243,649.94	1,971,168.34	N 57° 01' W	100.81
9	243,565.38	1,971,223.23	N 56° 51' W	100.64
10	243,481.12	1,971,278.26	N 57° 03' W	101.25
11	243,396.16	1,971,333.33	N 56° 53' W	80.88
12	243,328.41	1,971,377.51	N 57° 18' W	60.70
13	243,277.32	1,971,410.30	N 56° 50' W	80.73
14	243,209.74	1,971,454.46	N 57° 09' W	62.38
15	243,157.34	1,971,488.30	N 56° 50' W	80.70
16	243,089.80	1,971,532.45	N 56° 45' W	100.01
17	243,006.17	1,971,587.30	N 56° 57' W	101.05
18	242,921.47	1,971,642.41	N 56° 54' W	120.02
19	242,820.92	1,971,707.95	N 56° 52' W	140.96
20	242,702.89	1,971,785.01	N 60° 07' W	35.87

PROYECCION UTM, ZONA 19 NORTE

EST.	X	Y	RUMBOS	DIST.
21	242,671.78	1,971,802.88	N 56° 00' W	96.97
22	242,591.38	1,971,857.10	N 60° 24' W	40.32
23	242,556.32	1,971,877.02	N 56° 59' W	105.48
24	242,467.88	1,971,934.49	N 59° 34' W	57.02
25	242,418.71	1,971,963.38	N 57° 42' W	86.14
26	242,345.91	1,972,009.40	N 56° 30' W	127.53
27	242,239.55	1,972,079.78	N 56° 32' W	86.63
28	242,167.28	1,972,127.55	N 56° 45' W	137.72
29	242,052.11	1,972,203.06	N 57° 36' W	67.39
30	241,995.21	1,972,239.16	N 56° 53' W	23.00
31	241,975.94	1,972,251.73	N 51° 01' W	21.20
32	241,959.47	1,972,265.06	N 50° 17' W	73.91
33	241,902.62	1,972,312.30	N 50° 04' W	164.92
34	241,776.18	1,972,418.18	N 46° 39' W	120.68
35	241,688.42	1,972,501.01	N 44° 08' W	130.07
36	241,597.86	1,972,594.37	N 49° 43' W	54.65
37	241,556.18	1,972,629.71	N 44° 01' W	1,248.54

PROYECTO

AEROPUERTO INTERNACIONAL CABO ROJO
UBICADO EN PROV. PEDERNALES,
REPUBLICA DOMINICANA

TECNICOS

- ____ DISEÑO ARQUITECTONICO
CODIA:
- ____ DISEÑO ESTRUCTURAL
CODIA:
- ____ DISEÑO ELECTRICO
CODIA:
- ____ DISEÑO MECANICO
CODIA:
- ____ DISEÑO SANITARIO
CODIA:

COLABORADORES

- ____
- ____
- ____

DIBUJANTES

- ____
- ____
- ____

REVISION	FECHA	CONEXION O MODIFICACION	APROBADO
1	30/02/23	EMISION DE PLANO	-

FECHA: FEBRERO 2023 ESCALA: INDICADA

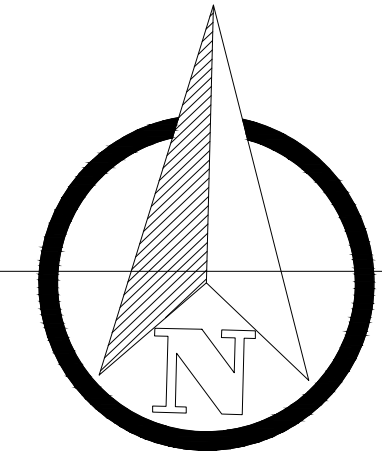
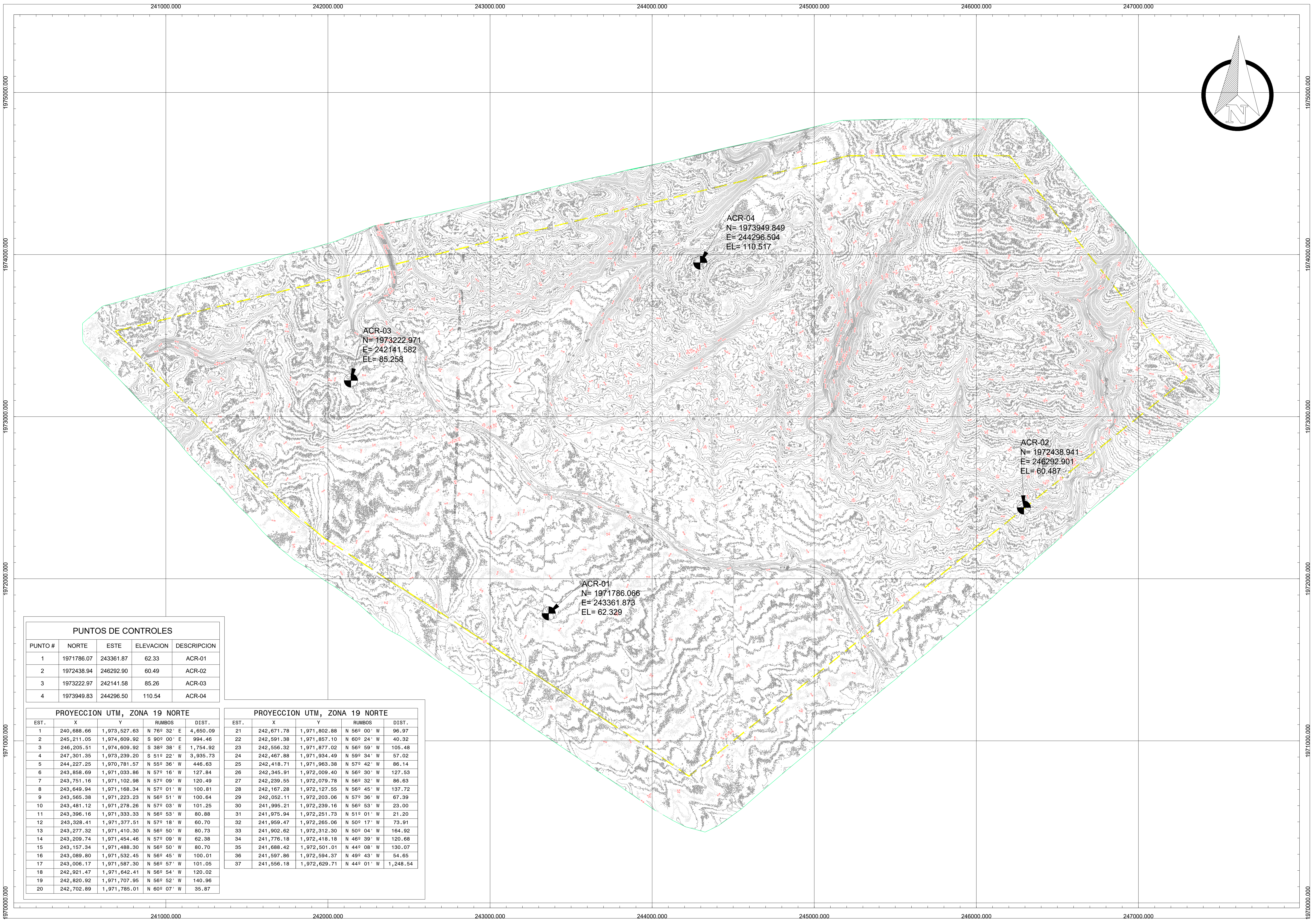
PROPIETARIO: AEROPUERTO INTERNACIONAL CABO ROJO

CONTENIDO

--	--



PLANO No. _____
HOJA No. _____ DE _____



PUNTOS DE CONTROLES

PUNTO #	NORTE	ESTE	ELEVACION	DESCRIPCION
1	1971786.07	243361.87	62.33	ACR-01
2	1972438.94	246292.90	60.49	ACR-02
3	1973222.97	242141.58	85.26	ACR-03
4	1973949.83	244296.50	110.54	ACR-04

PROYECCION UTM, ZONA 19 NORTE

EST.	X	Y	RUMBOS	DIST.
1	240,688.66	1,973,527.63	N 76° 32' E	4,650.09
2	245,211.05	1,974,609.92	S 90° 00' E	994.46
3	246,205.51	1,974,609.92	S 38° 38' E	1,754.92
4	247,301.35	1,973,239.20	S 51° 22' W	3,935.73
5	244,227.25	1,970,781.57	N 55° 36' W	446.63
6	243,858.69	1,971,033.86	N 57° 16' W	127.84
7	243,751.16	1,971,102.98	N 57° 09' W	120.49
8	243,649.94	1,971,168.34	N 57° 01' W	100.81
9	243,565.38	1,971,223.23	N 56° 51' W	100.64
10	243,481.12	1,971,278.26	N 57° 03' W	101.25
11	243,396.16	1,971,333.33	N 56° 53' W	80.88
12	243,328.41	1,971,377.51	N 57° 18' W	60.70
13	243,277.32	1,971,410.30	N 56° 50' W	80.73
14	243,209.74	1,971,454.46	N 57° 09' W	62.38
15	243,157.34	1,971,488.30	N 56° 50' W	80.70
16	243,089.80	1,971,532.45	N 56° 45' W	100.01
17	243,006.17	1,971,587.30	N 56° 57' W	101.05
18	242,921.47	1,971,642.41	N 56° 54' W	120.02
19	242,820.92	1,971,707.95	N 56° 52' W	140.96
20	242,702.89	1,971,785.01	N 60° 07' W	35.87

PROYECCION UTM, ZONA 19 NORTE

EST.	X	Y	RUMBOS	DIST.
21	242,671.78	1,971,802.88	N 56° 00' W	96.97
22	242,591.38	1,971,857.10	N 60° 24' W	40.32
23	242,556.32	1,971,877.02	N 56° 59' W	105.48
24	242,467.88	1,971,934.49	N 59° 34' W	57.02
25	242,418.71	1,971,963.38	N 57° 42' W	86.14
26	242,345.91	1,972,009.40	N 56° 30' W	127.53
27	242,239.55	1,972,079.78	N 56° 32' W	86.63
28	242,167.28	1,972,127.55	N 56° 45' W	137.72
29	242,052.11	1,972,203.06	N 57° 36' W	67.39
30	241,995.21	1,972,239.16	N 56° 53' W	23.00
31	241,975.94	1,972,251.73	N 51° 01' W	21.20
32	241,959.47	1,972,265.06	N 50° 17' W	73.91
33	241,902.62	1,972,312.30	N 50° 04' W	164.92
34	241,776.18	1,972,418.18	N 46° 39' W	120.68
35	241,688.42	1,972,501.01	N 44° 08' W	130.07
36	241,597.86	1,972,594.37	N 49° 43' W	54.65
37	241,556.18	1,972,629.71	N 44° 01' W	1,248.54

PROYECTO

AEROPUERTO INTERNACIONAL CABO ROJO
UBICADO EN PROV. PEDERNALES,
REPUBLICA DOMINICANA

TECNICOS

- DISENO ARQUITECTONICO
CODIA:
- DISENO ESTRUCTURAL
CODIA:
- DISENO ELECTRICO
CODIA:
- DISENO MECANICO
CODIA:
- DISENO SANITARIO
CODIA:

COLABORADORES

DIBUJANTES

REVISION	FECHA	EMISION O MODIFICACION	APROBADO
1	30/02/23	EMISION DE PLANO	-

PROPIETARIO
AEROPUERTO INTERNACIONAL CABO ROJO

CONTENIDO



PLANO No. _____
HOJA No. _____ DE _____